



B&C
Technologies



ECONOMICAL HARDMOUNT

HE
FAMILY

35 - 45 - 65 - 85 - 110
Pound Capacity

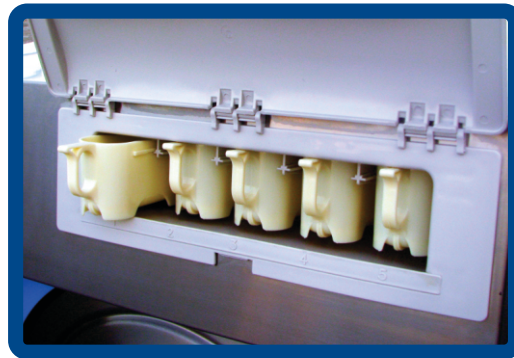
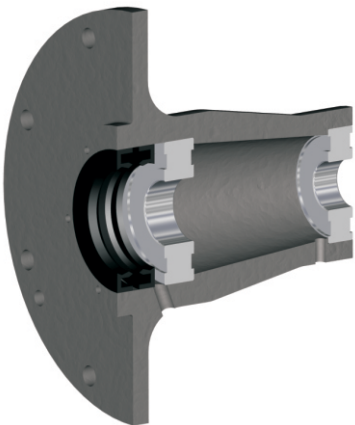
The HE Family

Hardmount High-Speed Professional Washer-Extractors for Small to Medium Sized Heavy-Duty On-Premise Laundry Applications, Including Healthcare, Hospitality, Corrections, Athletic, Carwash, Agriculture, and Dry Cleaners / Wet Cleaners

The HE Family is designed to be effortless and powerful while maintaining low cost of ownership. Your investment cost is quickly returned through the increased efficiency of a high speed extract hardmount washer. A simple design means fewer parts which in turn means less down time for the machine. With a 200G extract force goods spend less time in the dryer which leads to increased savings and less wear and tear on goods. This low maintenance, long lasting machine saves you time and money.

Solid Bearing Housing - High Quality Bearings and Seals

The bearing design found on the HE Family from B&C Technologies features a cast iron housing, oversized permanently lubricated bearings, plus double lip seals and a face seal for best protection. We also include a large leak-off area to protect the bearings in the event of a seal failure.

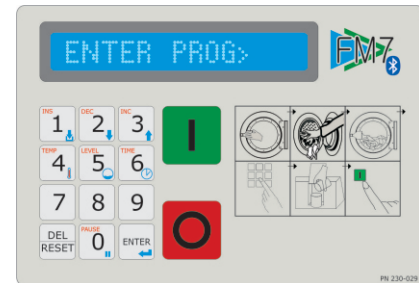


Supply Dispenser

The supply dispenser on the HE Family is located at a convenient height for easy access and has automatic flushing for ease of use. It's built to take daily wear and tear and is impervious to standard laundry chemicals. Easily adaptable with either the standard three or four cup dispenser and six liquid connections on the rear of the machine. The HE-35 and HE-45 feature a 3 cup supply compartment as standard while the HE-65, HE-85, and HE-110 feature a 4 cup supply dispenser.

The FM7 Advanced Microprocessor Control

The FM7 control allows complete flexibility while being trouble free and easy to use. It accepts programming via Bluetooth® and offers eight chemical signals plus chemical hold. Our easy to use WashTools™ Android application makes programming easy. With 30 wash programs and programmable water levels and speeds, the FM7 is designed to suit the most demanding needs.



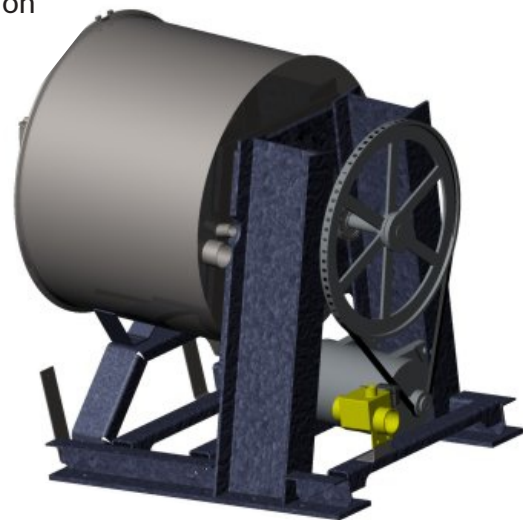
Large Door Opening-Safe Door Interlock

Loading and unloading laundry is much easier and faster with a door that opens nearly 180 degrees. To help protect your investment the door and hinge are made with 304 stainless steel and has a lifetime silicon door gasket for a leakproof seal. The door lock system is both safe and simple to operate.

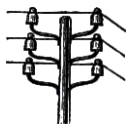


Hardmount Construction

The HE Family features a highly engineered, robust, and solidly welded steel frame built to withstand the rigorous demands of continuous operation. Bolt holes are located both on the inside and outside, allowing for side by side installation. Installation is fast and easy and integrated lifting bars allow the machine to be effortlessly moved with a pallet jack.



Modern Design Saves Money and the Environment



Save Electricity

The HE Family washer uses the most technologically advanced frequency inverter available today which offers an improvement of over 30% compared to multi-motor and other line started motors used on older or less advanced machines. The 200G extract force removes significantly more water than older, outdated machines as well, reducing drying times that saves you money on natural gas, time, plus reducing wear on your goods.



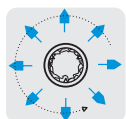
Wetclean Ready and Capable

The HE Family washer is perfect for wetcleaning. Completely flexible programming provides the most gentle wash actions without compromise, allowing the machine to handle water washing as well as regular laundry by simply running a different program. A dedicated wetcleaning machine is not needed as the HE competently handles both duties, especially when equipped with optional spray rinse.



Save Water

Our modern world has produced a host of new technologies to make life easier - your laundry facility can now benefit from these same innovations. The FM7 allows control over the water levels in the machine within one half of an inch, allowing the water level to be dialed in precisely for each wash program step. No more compromising with only 2 or 3 wasteful water levels.



More Savings Through Precision Programming

The flexible FM7 control allows additional water savings through precision programming. It is possible to program a diluting extract, which increases the effectiveness of the rinse steps and eliminates the need for extra rinsing. By eliminating water, wash chemicals and soils in this manner, as many as 2 rinses can be replaced and up to 10 minutes can be saved. Water consumption per cycle can be reduced by almost 1/2 gallon per pound of wash capacity. For example, an HE-110 washer programmed in this manner can expect to save over 50 gallons per wash program.

Specifications

MODEL	Units		HE-35		HE-45		HE-65		HE-85		HE-110	
	Metric	US										
CAPACITY:	kg	lbs	15.9	35.0	20.5	45.0	29.5	65.0	38.6	85.0	50.0	110.0
OVERALL DIMENSIONS:												
A - Width	mm	in	737	29.0	787	31.0	879	34.6	1048	41.3	1048	41.3
B - Depth	mm	in	889	35.0	1092	43.0	1168	46.0	1219	48.0	1363	53.7
C - Height	mm	in	1276	50.3	1321	52.0	1530	60.3	1721	67.8	1721	67.8
WEIGHT AND SHIPPING INFORMATION:												
Net Weight	kg	lbs	270	595	415	912	484	1065	723	1590	861	1895
Domestic shipping weight	kg	lbs	280	615	426	937	499	1097	740	1628	880	1935
CYLINDER INFORMATION:												
Diameter	mm	in	612	24.1	683	26.9	790	31.1	924	36.4	924.0	36.4
Depth	mm	in	435	17.13	525	20.7	560	22	574	22.6	718.0	28.3
Volume	liters	cu ft	128	4.52	187	6.6	274	9.7	372	13.13	467	16.5
CYLINDER SPEEDS:												
Wash	rpm	g	48.5	0.8	46	0.8	43	0.8	39.5	0.8	39.5	0.8
Distribution	rpm	g	77	2	73	2	67	2	62	2	62	2
Extract	rpm	g	765	200	726	200	673	200	626	200	626	200
DOOR OPENING AND HEIGHT:												
Diameter	mm	in	400	15.7	400	15.7	450	17.7	520	20.5	520	20.5
Height of door bottom above floor	mm	in	355	14	475	18.7	569	22.4	616	24.25	616	24.25
DRIVE INFORMATION:												
Number of motors	Number		1		1		1		1		1	
Size of motor	kW	Hp	1.5	2	2.2	3	3.7	5	5.5	7.5	7.5	10
WATER INLETS												
Hot water size	DN	in	20	3/4	20	3/4	20	3/4	20	3/4	25	1
Cold water size	DN	in	20	3/4	20	3/4	20	3/4	20	3/4	25	1
Additional water Inlet	DN	in	20	3/4	20	3/4	20	3/4	20	3/4	25	1
DRAIN OUTLETS AND CAPACITY:												
Number of drains	Number		1		1		1		1		1	
Drain size	mm	in	51	2	51	2	76.2	3	76.2	3	76.2	3
STEAM INLET and CONSUMPTION:												
Steam inlet size	DN	in	13	1/2	13	1/2	13	1/2	20	3/4	20	3/4
ELECTRICAL SERVICE:												
208-240VAC, 50/60Hz, 1PH	Amps	Breaker	6.2	15	8.1	15	8.8	15	22	30	31	40
208-240VAC, 50/60Hz, 3PH	Amps	Breaker	3.6	15	4.7	15	5.1	15	12.7	15	18	20
380-480VAC, 50/60Hz, 3PH	Amps	Breaker	1.8	15	2.3	15	2.5	15	6.3	15	9	15
208-240VAC, 50/60Hz, 3PH, Elec. Heat	Amps	Breaker	24	30	48	60	52	60	75	80	80	100
380-480VAC, 50/60Hz, 3PH, Elec. Heat	Amps	Breaker	12	15	24	30	26	30	38	40	40	50

Specifications subject to change without notice

Standard Features:

- ◆ All wetted parts are 304 (18/8) stainless steel
- ◆ 4 compartment supply dispenser
- ◆ 30 cycle microprocessor
- ◆ 200G extraction force
- ◆ 5 degree lean back for strength and easier loading
- ◆ Built in vacuum breaker
- ◆ Variable speed inverter drive
- ◆ Wetcleaning functionality built in - no special options required

Optional Features:

- ◆ 5 compartment supply dispenser (HE-65 and larger)
- ◆ Extra water inlet
- ◆ Extra drain
- ◆ Steam heating
- ◆ Electric heating
- ◆ Through the door spray rinse



B&C Technologies
Panama City Beach, FL
850-249-2222
www.bandctech.com
sales@bandctech.com

60/36 Warranty



60 Months: Bearings, Bearing Housing, Frame, Shaft, Cylinder & Shell
36 Months: All other non wear parts

