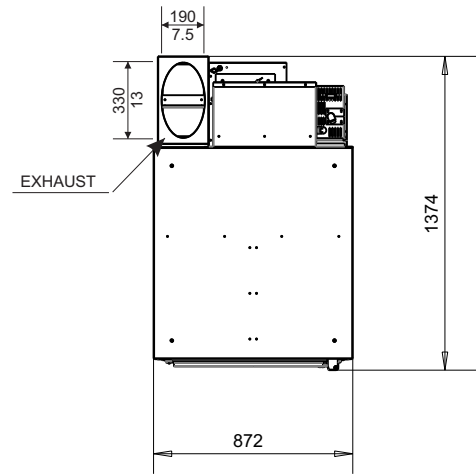
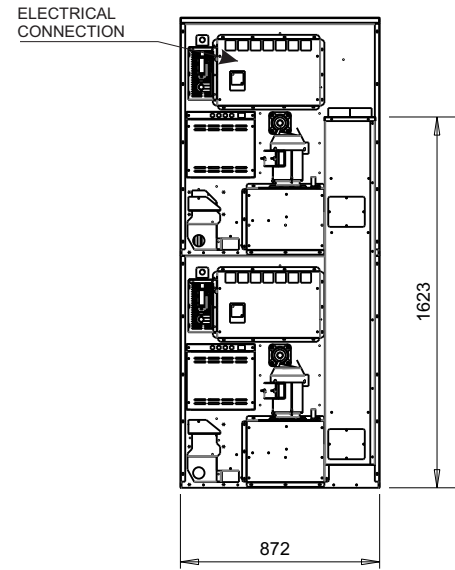
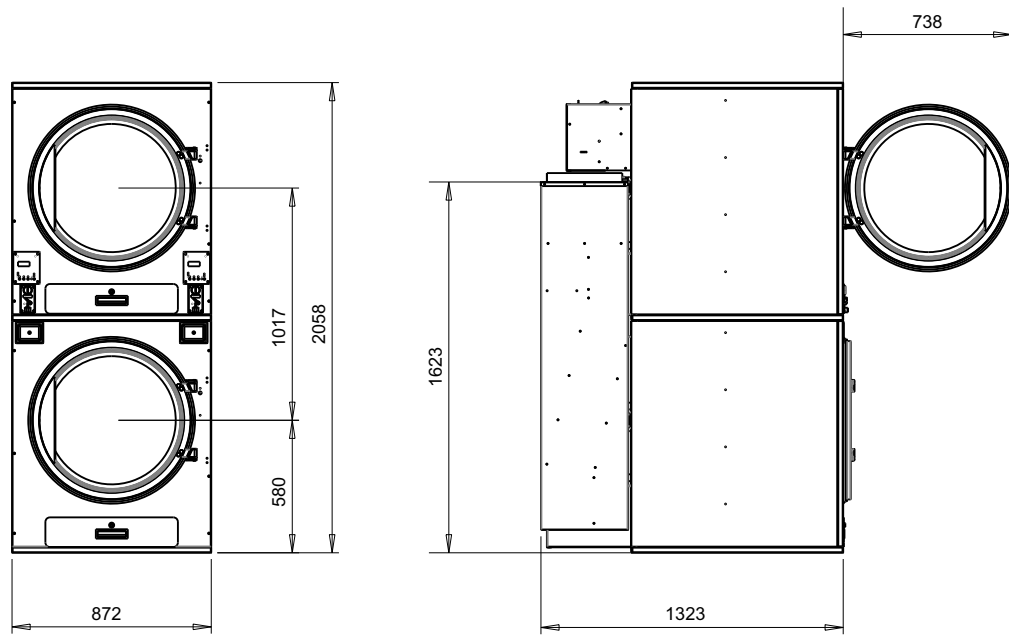


A



| DE-250 | Metric | USA | | |
|------------------------------|----------|--------|-------|--------|
| Capacity - per pocket | kg | lbs | 22.73 | 50 |
| Dimensions | | | | |
| A - Width | mm | in | 872 | 34.33 |
| B - Depth | mm | in | 1323 | 52.09 |
| C - Height | mm | in | 2058 | 81.02 |
| Drying Cylinder | | | | |
| Diameter | mm | in | 828 | 32.60 |
| Depth | mm | in | 749 | 29.49 |
| Volume | liters | cu ft | 400 | 14.24 |
| Drive Information | | | | |
| Cylinder motor | kW | HP | 0.18 | 0.25 |
| Blower motor | kW | HP | 0.37 | 0.5 |
| Gas Heat | | | | |
| Airflow - per pocket | cu m/min | CFM | 20 | 720 |
| Gas consumption - per pocket | kcal/hr | BTU/hr | 52000 | 206353 |
| Gas inlet size | NPT | | 1/2 | |
| Exhaust connection | mm | in | 250 | 9.8 |
| Electrical, 208-230VAC, 3PH | Breaker | FLA | 10 | 3.15 |
| Electrical, 440-460VAC, 3PH | Breaker | FLA | 10 | 1.8 |
| Electrical, 208-230VAC, 1PH | Breaker | FLA | 10 | 7 |
| Electrical, 120VAC, 1PH | Breaker | FLA | 15 | 11 |
| Net weight | kg | lbs | 350 | 772 |
| Shipping weight | kg | lbs | 375 | 827 |
| Electric Heat | | | | |
| Airflow - per pocket | cu m/min | CFM | 20 | 720 |
| Electric consumption | kW | | 24 | |
| Exhaust connection | mm | in | 250 | 9.8 |
| Electrical, 208-230VAC, 3PH | Breaker | FLA | 80 | 67 |
| Electrical, 440-460VAC, 3PH | Breaker | FLA | 40 | 34 |
| Net weight | kg | lbs | 324 | 714 |
| Shipping weight | kg | lbs | 350 | 772 |

| REV | BY | DATE | REV. DESCRIPTION |
|---|-----------------------------------|-----------|---|
| A1 | AFA | 12-9-2022 | Created |
| DRAWN BY | | DATE |  Panama City Beach, FL Phone: 850-249-2222 Fax: 850-249-2226 www.bandtech.com |
| A. Adcock | | 12-9-2022 | |
| CHECKED BY | | DATE | |
| P. Noblit | | 12-9-2022 | |
| DESCRIPTION | | | |
| General Technical Specifications DE-250 Stack Dryer | | | |
| DATE | FILE NAME | SHEET | |
| 12-9-2022 | DE-250-General-Specifications.cdr | 1 OF 1 | |