



Technical Service Bulletin 042
Windows 11 Bluetooth Connection
Version 1.0
1-MAY-2023

1. Open the Control Panel

i Type Control Panel in the Search Bar and open to this screen

Control Panel

Adjust your computer's settings

View by: Category

- System and Security**
Review your computer's status
Save backup copies of your files with File History
Backup and Restore (Windows 7)
- Network and Internet**
View network status and tasks
- Hardware and Sound**
View devices and printers
Add a device
Adjust commonly used mobility settings
- Programs**
Uninstall a program
- User Accounts**
Change account type
- Appearance and Personalization**
- Clock and Region**
Change date, time, or number formats
- Ease of Access**
Let Windows suggest settings
Optimize visual display

2. Search for Bluetooth and Choose Change Bluetooth Settings

i Type Bluetooth in the top right search bar and select Change Bluetooth Settings

Bluetooth - Control Panel

Control Panel Bluetooth

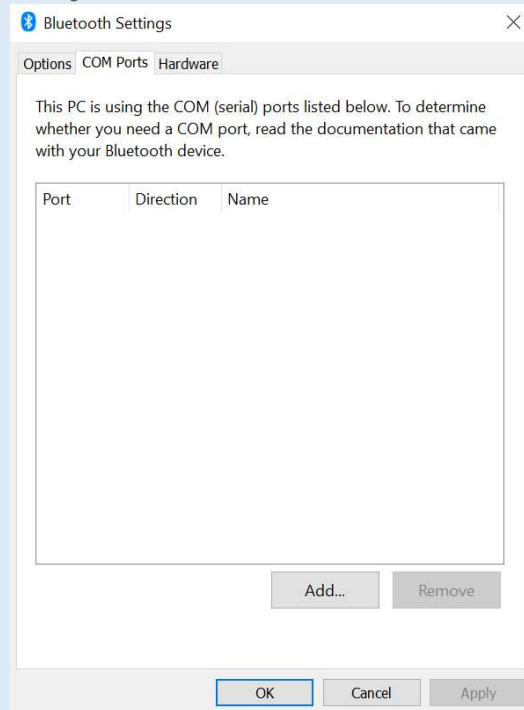
- Devices and Printers**
Add a Bluetooth device
Change Bluetooth settings
View devices and printers
- Network and Sharing Center**
Set up a connection or network

Search Windows Help and Support for "Bluetooth"



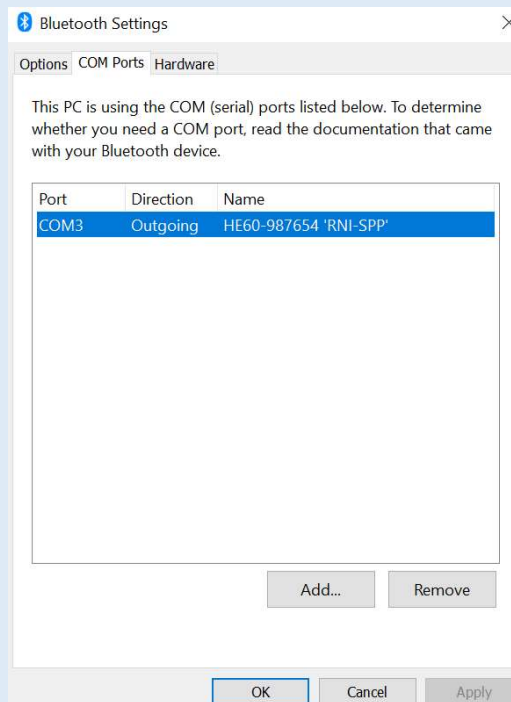
3. Select COM Ports Tab

i Select the COM Ports Tab to show existing connections.



4. Remove Existing Connections

i Select existing connections and click remove to remove them from the list. NOTE: there may be nothing to remove

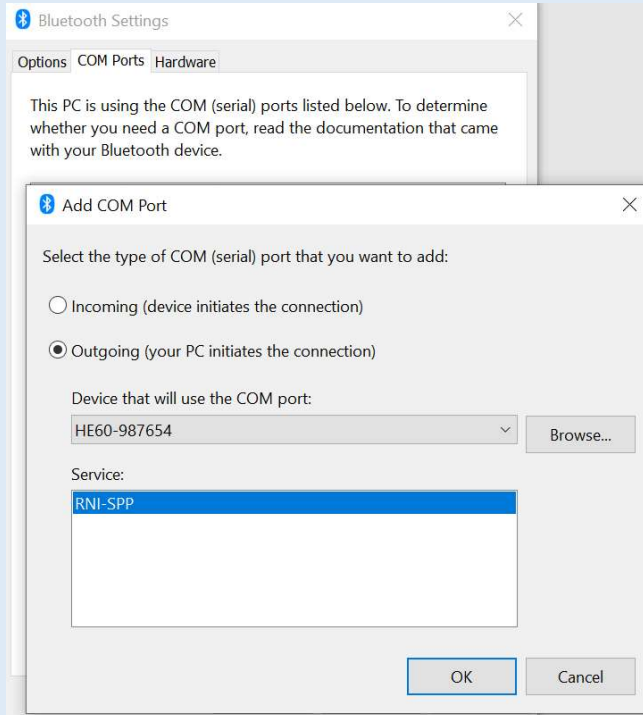




5. Add New Connection



Select Add... Then select Outgoing (your PC initiates the connection). Click Browse to select the machine you wish to connect to. Click RNI-SPP then Select OK



6. Check the COM number under Port



Under Port it shows COM3 which means the HE60 is connected to COM port 3. Use this Value for the EL6 Software. E.G. In the EL6 Software under Communications click Com Setup. Choose COM 3 then press OK. The EL6 is now connected to the computer's Bluetooth.

